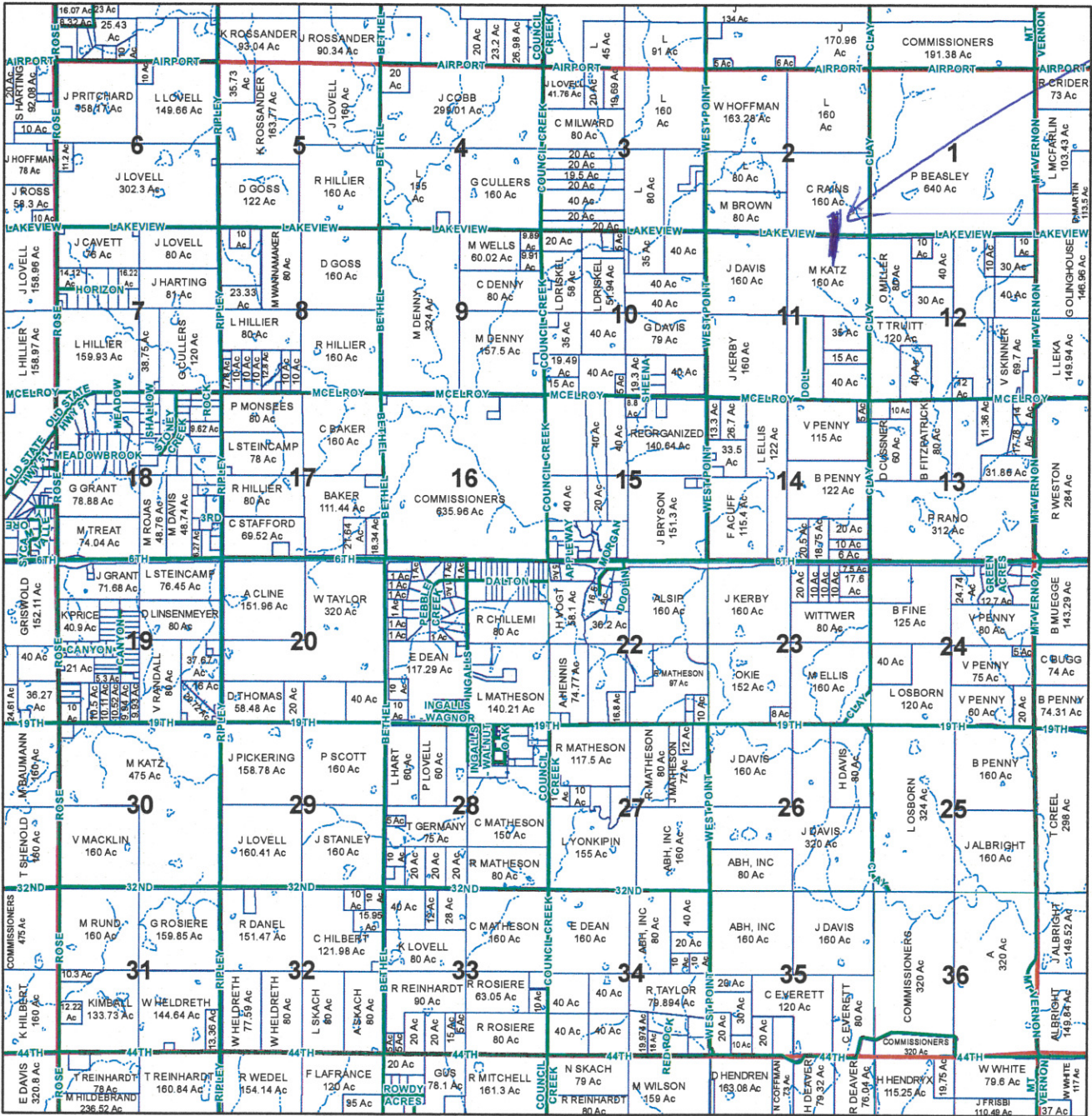


PAYNE COUNTY PLAT BOOK

TOWNSHIP 19N - RANGE 4E

PLEASE MARK
CROSSING WITH
ARROW OUT TO MARGIN

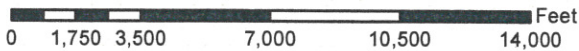
SEE PAGE 19



SEE PAGE 16

SEE PAGE 23

SEE PAGE 21



This map is for assessment purposes only and is not intended for use in making conveyances or for preparing legal descriptions.

Copyrighted 2013 Payne County Assessor,
Stillwater, Oklahoma.

20

Ownership Updated: May 2013

				T20N-R2E PG 11	T20N-R3E PG 15	T20N-R4E PG 19	
T19N-R1W PG 5	T19N-R1E PG 8	T19N-R2E PG 12	T19N-R3E PG 16	T19N-R4E PG 20	T19N-R5E PG 23	T19N-R6E PG 26	
T18N-R1W PG 6	T18N-R1E PG 9	T18N-R2E PG 13	T18N-R3E PG 17	T18N-R4E PG 21	T18N-R5E PG 24	T18N-R6E PG 27	
T17N-R1W PG 7	T17N-R1E PG 10	T17N-R2E PG 14	T17N-R3E PG 18	T17N-R4E PG 22	T17N-R5E PG 25	T17N-R6E PG 28	